

SHORING BEAMS

REMARKS.:

Round- and Square-Beams are used in compact vehicles, lorries, containers etc. in connection with lashing tracks. They grant formfitting mechanical safeguarding.

Shoring beams can be delivered with different endfittings. The conic endfittings grant perfect fitting within the lashing tracks.

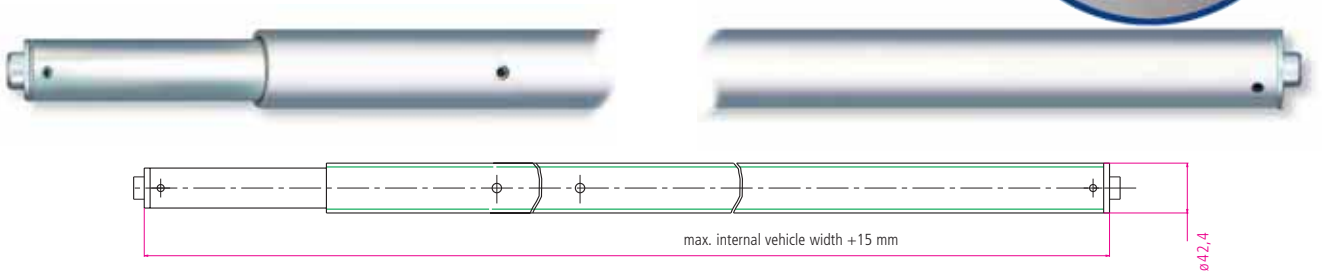
WISTRA recommends:

Also available with PVC coating, if bigger quantities are ordered, the coating will also be marked with your company's logo.



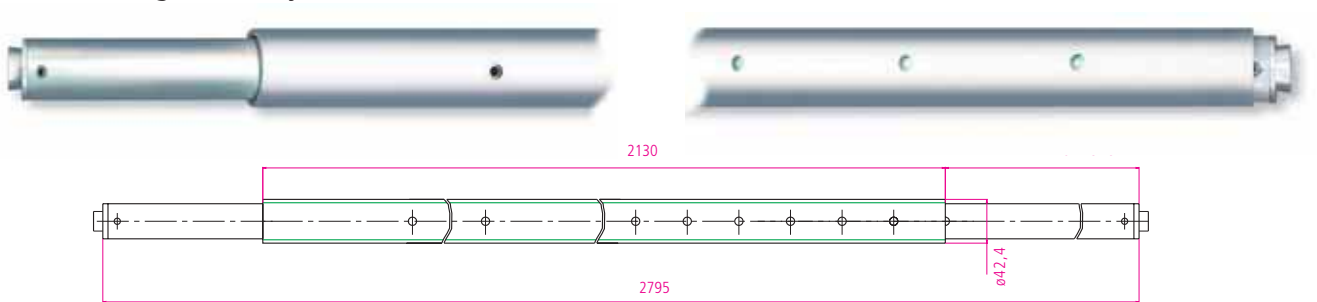
Mechanical Protection

Round Shoring Beams



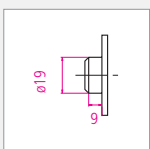
Order-No.:	Type of endfittings	Internal vehicle width	Material	Weight
22 1813 00 .. 12	.. 12	2000 – 2080 mm	steel galvanized	7,0 kg
22 1814 00 .. 12	.. 12	2100 – 2180 mm	steel galvanized	7,8 kg
22 1815 00 .. 12	.. 12	2200 – 2280 mm	steel galvanized	8,0 kg
22 1816 00 .. 12	.. 12	2300 – 2380 mm	steel galvanized	8,4 kg
22 1817 00 .. 12	.. 12	2440 – 2520 mm	steel galvanized	8,5 kg
22 1818 00 .. 12	.. 12	2400 – 2480 mm	steel galvanized	8,5 kg
22 1819 00 .. 12	.. 12	2500 – 2580 mm	steel galvanized	8,5 kg

Round Shoring Beams, adjustable

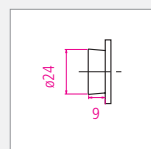


Order-No.:	Type of endfittings	Internal vehicle width	Material	Weight
22 1811 00 .. 12	.. 12	2190 – 2650 mm	steel galvanized	7,0 kg
22 1808 00 .. 20	.. 20	2190 – 2650 mm	aluminium	4,0 kg

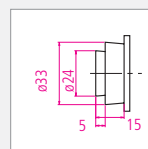
19 mm Endfitting
cylindric
Type: 09



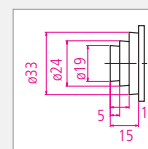
24 mm Endfitting
conic
Type: 24



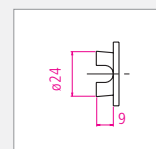
24 / 33 mm Combi-Endfitting
conic
Type: 43



19 / 24 / 33 mm Combi-Endfitting
conic
Type: 44

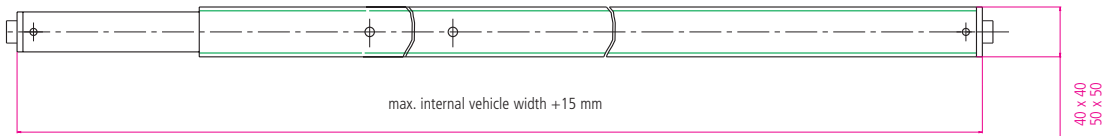


24 mm Endfitting for Pin-Track
conic
Type: 49



SHORING BEAMS

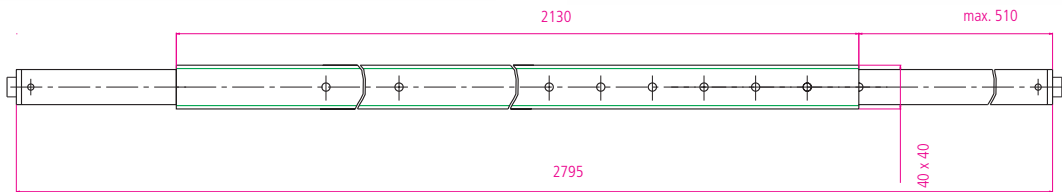
Square Shoring Beams



Order-No.:		internal vehicle width	Material	Profile	Weight
Type of endfittings					
22 1827 00 .. 12		2440 – 2520	steel galvanized	40x40	7,5 kg
22 1852 12		on demand	steel galvanized	50x50	

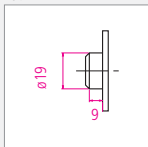
Mechanical Protection

Square Shoring Beams, adjustable

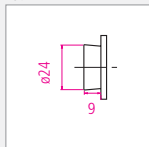


Order-No.:		internal vehicle width	Material	Profile	Weight
Type of endfittings					
22 1812 00 .. 12		2190 – 2650 mm	steel galvanized	40x40	7,5 kg

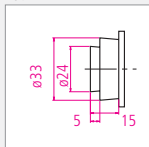
19 mm Endfitting
cylindric
Type: 09



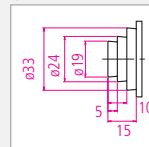
24 mm Endfitting
conic
Type: 24



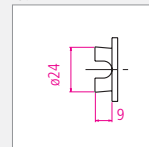
24 / 33 mm Combi-Endfitting
conic
Type: 43



19 / 24 / 33 mm Combi-Endfitting
conic
Type: 44



24 mm Endfitting for Pin-Track
conic
Type: 49



SHORING BEAMS

SPECIAL VERSION:

Safeguarding of goods - an interesting point also for closed compact vehicles, swap bodies and curtainsiders. The formfitting safeguarding is a quick and easy possibility - only condition is a suitable vehicle. When choosing or planning a vehicle the application has to be considered and the vehicle should be provided with hole-tracks.

WISTRA have developed their shoring beam systems in close cooperation with producers p.e. rail, post, parcel services etc. Quality and easy and quick handling have been proved during longlasting practical use and provide the vehicle with excellent and formfitting safeguarding-system.



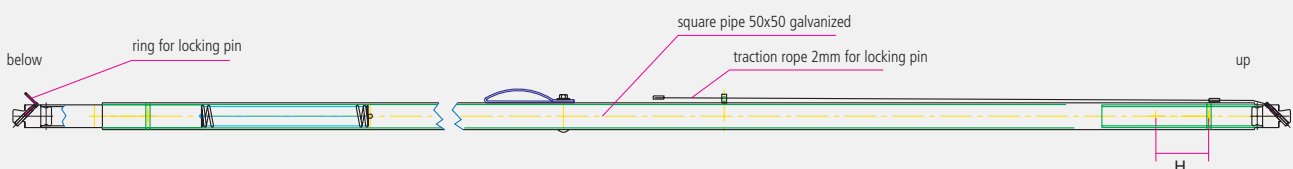
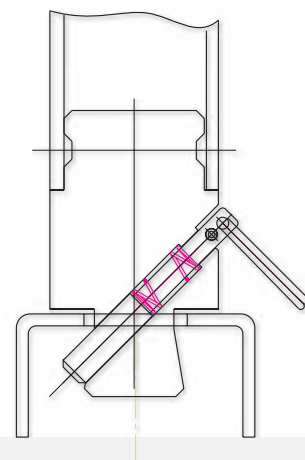
SPB 50 x 50 Dual Telescopic Beam

Order-No.: 22 1852 03 53 12

PERFORMANCE:

- Endfitting: endfittings (adjustable at both ends) with a diameter of 24 mm
- Staypipe: steel 50 x 50 mm galvanized
- Load Capacity: 1000 daN (1000 kg) at constant line load
- Usage: 3030 mm clear dimension between the tracks – has to be indicated when ordering!

To be used also in curtainsiders with a stiff lift-off roof for backwards safeguarding.



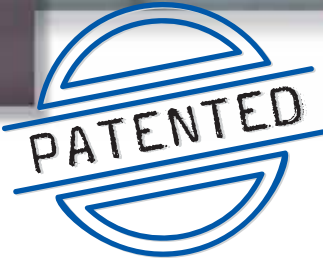
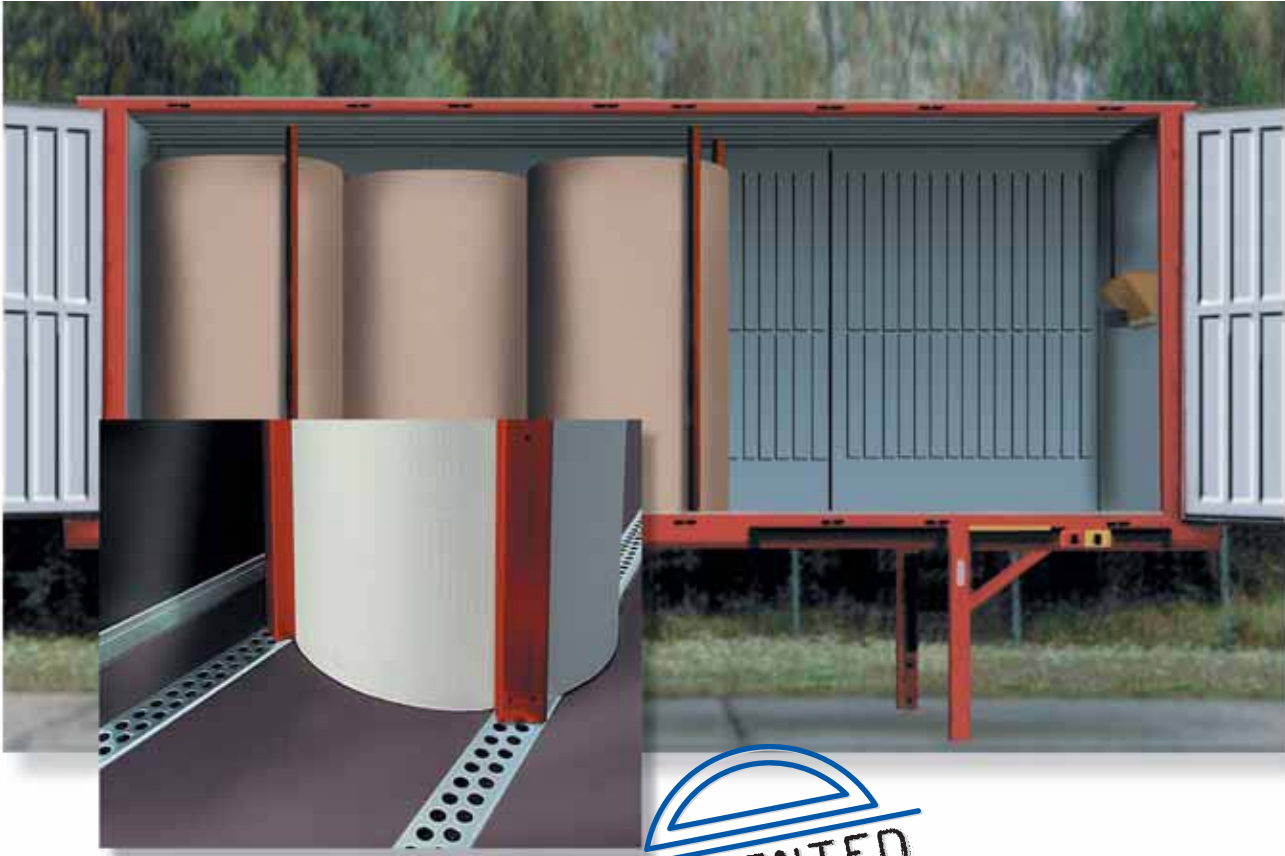
SHORING BEAMS

Mechanical Protection

SPECIAL VERSION:

Systems for all means of transportation with an extremely high payload - especially regarding combined transports - have to fulfill high demands.
WISTRA POWER Shoring Beam System has an enormous capacity. An example is the transport of standing paper reels. The tandem holetracks and the twin-fixings enable the squarepipes to turn by about 30°.

The fragile goods get in touch with a broad surface. This avoids damages occurring due to high pressure at small edges. For the transport of paper reels regulation (VDI no. 2700, page 9) prescribes the use of Anti Slip Mats.



SPB 50 x 90 with twin fixings
Order-No.: 22 3001 01 01 12

PERFORMANCE:
 Endfitting: twin fixings - diameter 24 mm
 Staypipe: galvanized steel 50 x 90 mm
 Load Capacity: 2500 daN (2.500 kg) at constant line load
 Usage: 2690 mm clear dimension between the tracks
 – has to be indicated when ordering!
 Weight: 24,0 kg

Usage in connection with tandem holetracks

Order-No.: 21 3004 53 98 01
 FI 98 x 5 / tandem diameter 26 mm

Order-No.: 21 3004 53 25 10
 U 100 x 27 x 4 / tandem diameter 26 mm

SHORING BEAMS

SPECIAL VERSION:

The patented Shoring Beam "Power Stop" was especially developed in order to fulfill the requirements of the combined transport on road and rail. This combined transport is becoming more and more important in Europe for swap bodies and other trailers.

This special solution consists of a shoring beam being vertically fixed and running on rollers in the track. This is granting an easy handling and theft protection and is avoiding unintentional

removing. The shoring beam is positioned with the help of hole tracks fixed on the floor and at the ceiling.

Up to four "Power Stops" can be used in a standard swap body positioned parallelly as well as staggered. This new solution is suitable to fix the WISTRA cargo net "safeguard" due to its robust design. If the shoring beam "Power Stop" is not used it can be lifted up and locked under the running rail.

SPB 50 x 90 lead by rolls, Twin Fixings at the bottom

Order-No.: 22 3001 01 01 12

PERFORMANCE:

Endfitting: Fixings at the top, twin-fixings at the bottom - diameter 24 mm
Staypipe: galvanized steel 50 x 90 mm
Load Capacity: 2500 daN (2.500 kg) at constant line load
Usage: 2080 mm clear dimension between the tracks - has to be indicated when ordering!
Weight: 20,0 kg

Usage in connection with tandem hole runway track and holetrack

Order-No.: 22 3004 00 00 20

Alu tandem hole runway track
- diameter 25 mm

Order-No.: 21 3004 50 25 12

Fl 50 x 5 / single - diameter 26 mm

