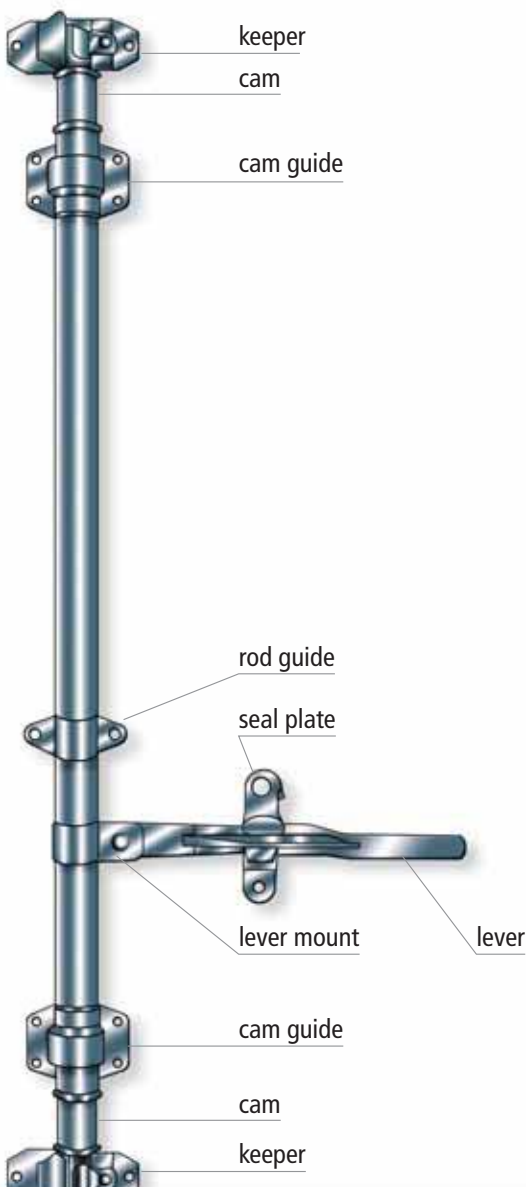


DOOR GEARS

Powerbrace DL

- Robust door gear for box and swap bodies, containers etc.
- Due to patented construction of the cam and keeper the torsion of the tube is avoided,
- The "over centre action" closing (approx. 10°) prevents the door from opening.
- Due to the "icebreaker device" on the cam even icy doors can be opened easily.
- Has been used successfully for many years by the vehicle and container industries.

Wistra door gears

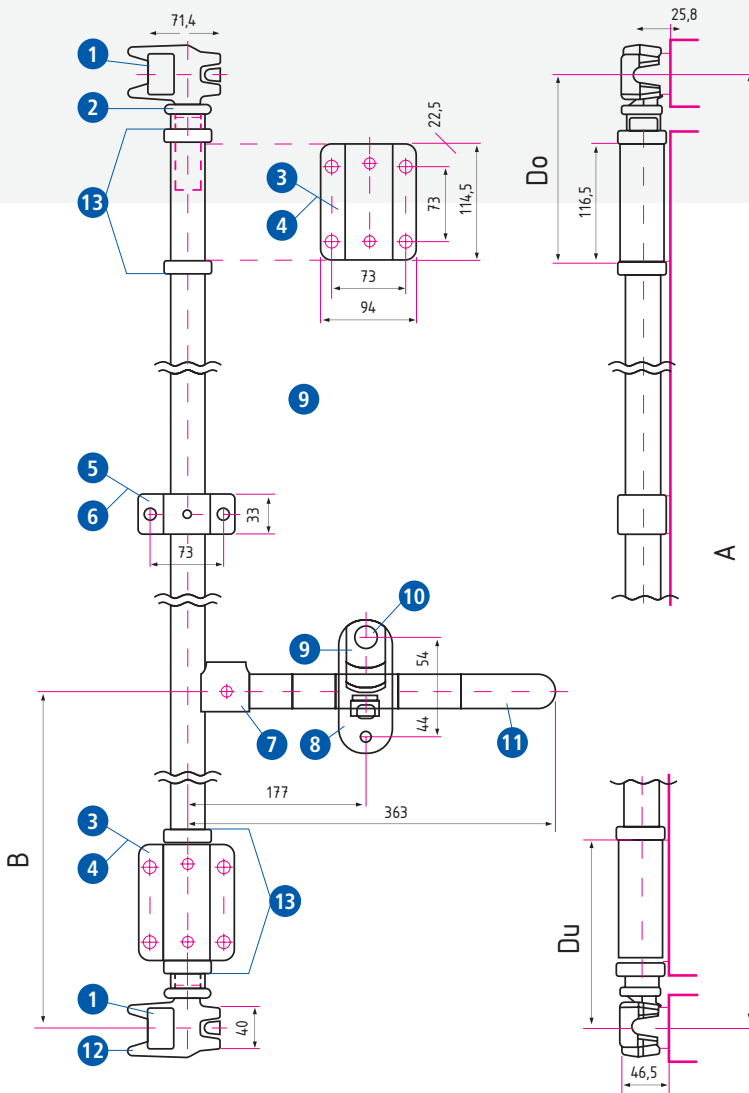


The „over centre action“



DOOR GEARS

Powerbrace DL



Powerbrace Quad Finger for 1" tube

PERFORMANCE:

Material: forged steel, founded or pressed, hot dip galvanized resp. zinc plated
 Weight: approx. 5.2 kg

Also available in welded and hot dip galvanized version, i.e. including connecting tube.

Standard version

Order-No. 3491 0521 005 (1 complete set)

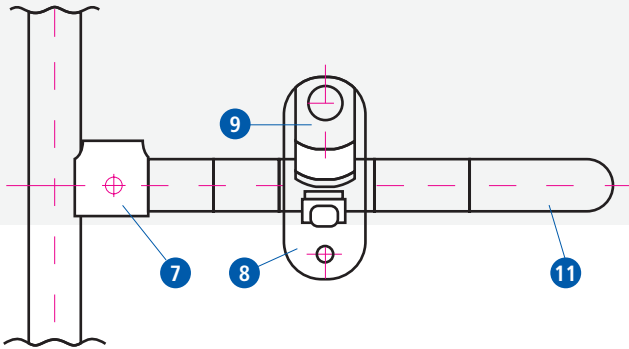
	Order-No.	description	pieces
1	34237.01	keeper	2
2	34202.01	cam	1
3	36008.05	cam guide	2
4	36009.01	cam guide bearing for 3	2
5	36010.05	rod guide	1
6	36011.01	rod guide bearing for 5	1
7	34067.01	lever mount	1
8	34011.05	seal plate	1
9	34012.05	seal pin	1
10	33085.03	rivet	1
11	34090.05	lever	1
12	34201.01	cam	1
13	33901.01	anti-rack ring	4

.01 = self colour · .03 = zinc plated
 .05 = hot dip galvanized

POWERBRACE

DOOR GEARS

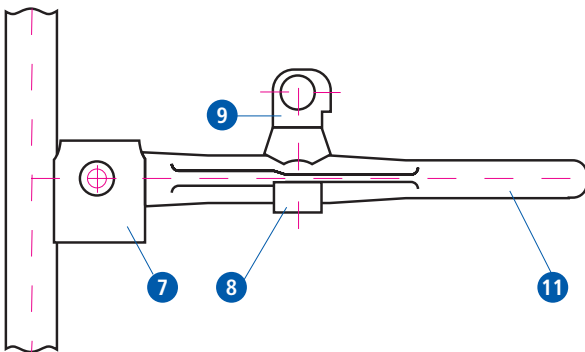
with pressed lever



Order-No.	description	pieces
...		
7	34067.01 lever mount	1
8	34011.05 seal plate	1
9	34012.05 seal pin	1
...		
11	34090.05 lever	1
...		

.01 = self colour · .03 = zinc plated
.05 = hot dip galvanized

with forged lever



Order-No.	description	pieces
...		1
7	33071.01 lever mount	1
8	33047.03 seal plate weld-on or	1
8	33041.05 seal plate bolt-on or	1
8	33043.05 seal plate bolt-on	1
	33083.03 with collar	
9	33055.05 seal pin RH or	1
9	33050.05 seal pin LH	1
11	33080.05 lever	
...		

.01 = self colour · .03 = zinc plated
.05 = hot dip galvanized