

LASHING POINTS

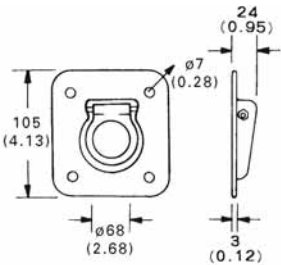
WISTRA Lashing Points have been developed especially for usage in containers and vehicles.

WISTRA Lashing Points are available in two versions - they can be let in and also put on the container or the vehicle.

The minimum regulations for lashing points in vehicles etc. which are used for the transport of goods are manifested in the DIN EN 12640.

Lashing Point

Order-No.: 24 315 00 000 12

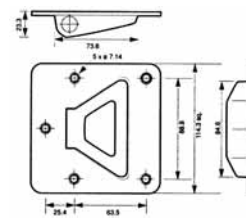


allowed Breaking Strength
daN = 800
Material: Steel electroplated
Weight: 0.5 Kg



Lashing Point

Order-No.: 24 320 00 000 14

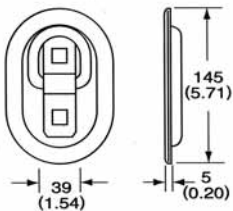


allowed Breaking Strength
daN = 1,000
Material: Steel hot dip galvanized
Weight: 0.36 Kg



Lashing Point

Order-No.: 24 361 00 000 12

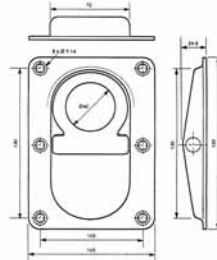


allowed Breaking Strength
daN = 2,200
Material: Steel electroplated
Weight: 0.4 Kg



Lashing Point

Order-No.: 24 330 00 000 14

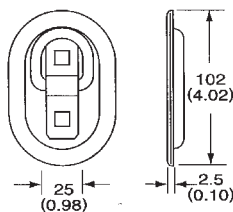


allowed Breaking Strength
daN = 1,000
Material: Steel hot dip galvanized
Weight: 0.54 Kg



Lashing Point

Order-No.: 24 360 00 000 12

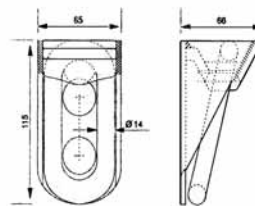


allowed Breaking Strength
daN = 350
Material: Steel electroplated
Weight: 0.18 Kg



Floor Lashing Point

Order-No.: 24 500 00 000 15

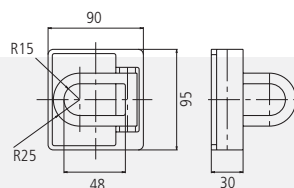


allowed Breaking Strength
daN = 3,000
Material: Primed Steel
forged ring
Weight: 0.925 Kg



Lashing Point

Order-No.: 24 370 00 000 10

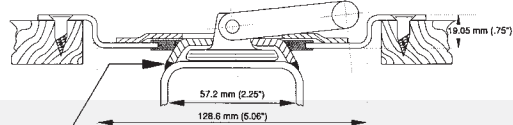


allowed Breaking Strength
daN = 2,500
Material: Steel electroplated
Weight: 0.88 Kg



Floor Lashing Point

Order-No.: 24 340 00 000 14



allowed Breaking Strength daN = 3,048
Material: galvanized Steel
Lashing Point with rotatable
joint for welding at weight
bearing parts
Weight: 0.38 Kg

