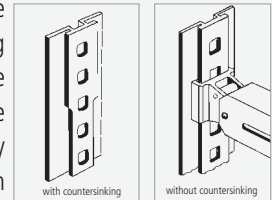


GUIDING TRACKS

PERFORMANCE:

Guiding tracks for sliding decking beams are principally used vertically for double deck systems adjustable in height. The fitted tracks show an overall height of only 12 mm.

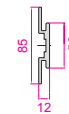
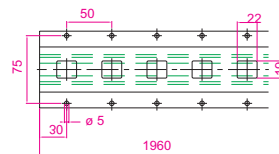
For optimal utilization of internal height the distance between lower edge of grid hole and the roof to be 65 mm. During installation of the tracks a free space (clearance) of 75 mm to the floor resp. baseboard is necessary or to choose the track with countersinking.



Guiding tracks for sliding decking beams



Standard Length: 1,960 mm
Material: aluminium
Weight: 2.4 kg

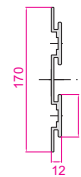
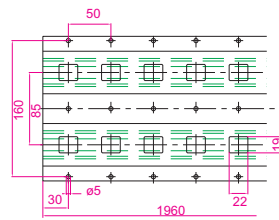


Order-No.:	Performance
22 7002 00 00 20	without countersinking
22 7002 01 00 20	with countersinking

Guiding tracks for sliding decking beams



Standard Length: 1,960 mm
Material: aluminium
Weight: 4.7 kg

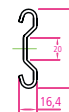
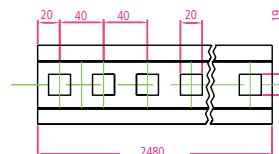


Order-No.:	Performance
22 7002 04 00 20	without countersinking
22 7002 05 00 20	with countersinking

Guiding tracks for sliding decking beams



Standard Length: 2,480 mm
Material: steel
Weight: 6.3 kg

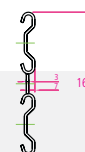
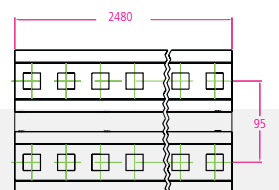


Order-No.:	Performance
22 7004 01 00 10	untreated
22 7004 01 00 12	galvanized steel

Tandem guiding tracks for sliding decking beams



Standard Length: 2,480 mm
Material: steel
Weight: 13.0 kg

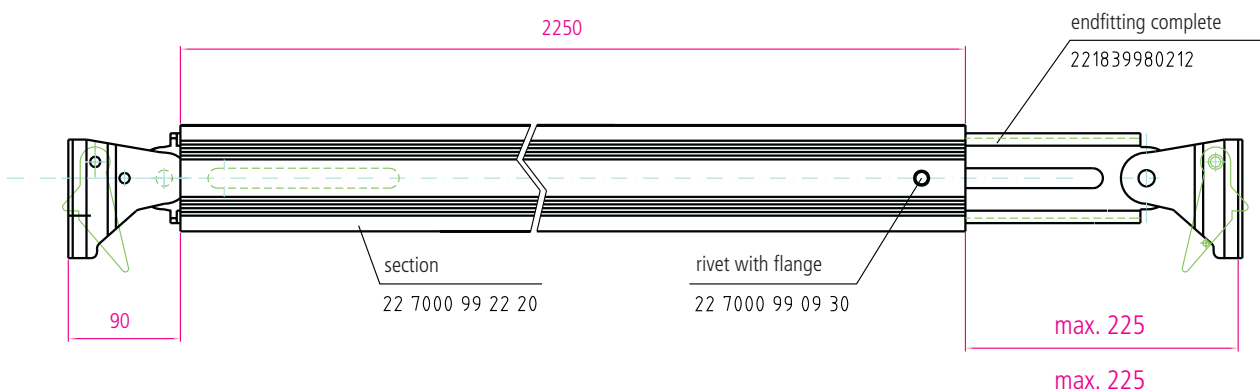


Order-No.:	Performance
22 7004 02 00 10	untreated
22 7004 02 00 12	galvanized steel

DECKING BEAM

GLB 1000 steel

Order-No.: 22 5002 00 00 12



Mechanical Protection

PERFORMANCE:

Endfitting: endfitting made of steel for guiding track, steel
Order-No.: 22 7004 02 00 10

Stay pipe: aluminium profile 66 x 84 mm

Load capacity: 1,000 da N (1000 Kg) at continuous line load

Usage: min. 2,430 mm

Weight: 10.9 kg

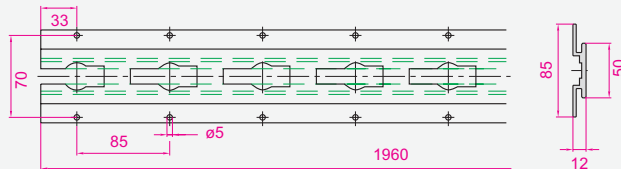
Option: special lengths
design with pallet safety device
property marking: engraving
property marking: document foil

GUIDING TRACKS

Guiding Tracks-MV for Sliding Decking Beams Aluminium



Standard Length: 1,960 mm
Material: Aluminium
Weight: 2.4 kg

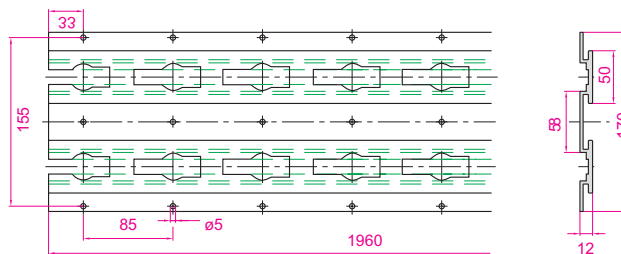


Order-No.:	Performance
22 7102 00 00 20	without Countersinking
22 7102 01 00 20	with Countersinking

Tandem-Guiding Tracks-MV for Sliding Decking Beams Aluminium



Standard Length: 1,960 mm
Material: Aluminium
Weight: 4.7 kg

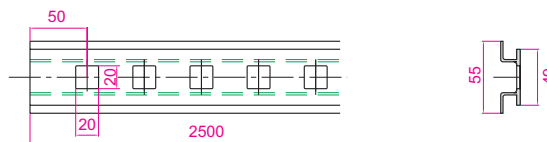


Order-No.:	Performance
22 7102 04 00 20	without Countersinking
22 7102 05 00 20	with Countersinking

Guiding Tracks for Sliding Decking Beams Steel

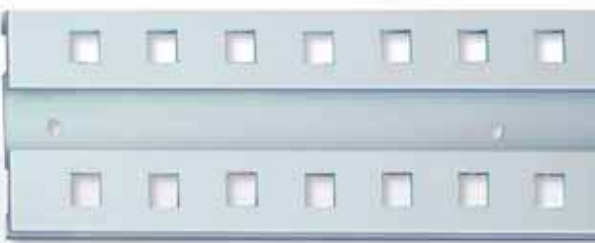


Standard Length: 2,500 mm
Material: Steel primed
Weight: 4.7 kg

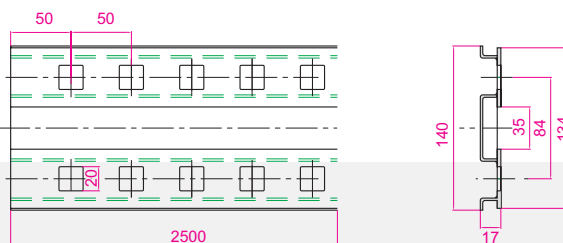


Order-No.:	Performance
22 7003 01 00 15	without Countersinking
22 7103 01 00 15	with Countersinking

Tandem-Guiding Tracks for Sliding Decking Beams Steel



Standard Length: 2,500 mm
Material: Steel primed
Weight: 9.9 kg



Order-No.:	Performance
22 7003 02 00 15	without Countersinking
22 7103 02 00 15	with Countersinking